

9. INSTALL SW1-SW2 AS SHOWN BELOW IN FIG. 1
SW1-SW2: PART# CTS, 204-121LPST

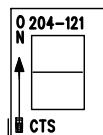
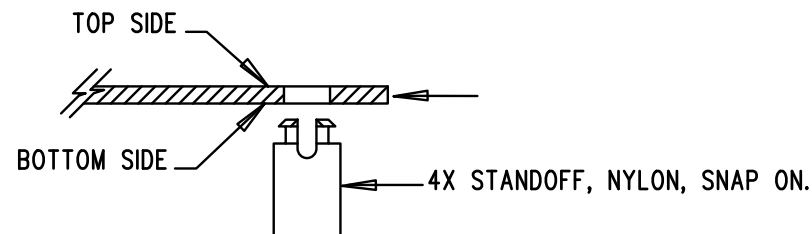


FIG. 1 TOP VIEW MOUNT

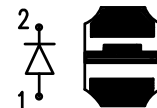
REVISION HISTORY				
ECO	REV	DESCRIPTION	APP. ENG.	DATE
-	2	PRODUCTION	JIM N.	11-18-13

NOTES: UNLESS OTHERWISE SPECIFIED

1. WORKMANSHIP SHALL BE IN ACCORDANCE WITH IPC-A-610.
2. ASSEMBLY PROCESS SHALL INCLUDE: REFLOW SOLDER TOP SIDE SMD.
3. PARTS TO OMIT WILL BE SPECIFIED ON THE BILL OF MATERIALS. LOCATIONS OF OMITTED PARTS SHALL BE FREE OF SOLDER. MASK THE SOLDER STENCIL WHERE SMT PARTS ARE OMITTED.
4. INSTALL SHUNTS AS SHOWN ON ASSY DRAWING.
5. DEPANELIZE BOARDS AFTER ASSEMBLY AND ROUTE-OUT THE BREAKOUT TABS ON FOUR SIDES OF THE BOARD EDGE.
6. DO NOT APPLY ANY KIND OF ASSEMBLY STAMP OR QA STAMP TO ANY BOARD.
7. INSTALL 4 STANDOFFS AT 4 LOCATIONS AS SHOWN BELOW:



8. INSTALL LED D1 AS SHOWN BELOW:



D1-BOTTOM VIEW:
PART# ROHM, SML-P11VTT86

APPROVALS		 1630 MCCARTHY BLVD MILPITAS, CA 95035 PH: (408)432-1900 www.linear.com LTC CONFIDENTIAL-FOR CUSTOMER USE ONLY		
PCB DES.	NC			
APP ENG.	JIM N.			
		TITLE: TOP ASSEMBLY DRAWING ULTRA-LOW VOLTAGE ENERGY HARVESTER AND PRIMARY BATTERY LIFE EXTENDER		
		SIZE N/A	IC NO. LTC3107EDD DEMO CIRCUIT 2103A	REV. 2
SCALE = NONE		FILENAME: DC2103A-2.PCB		SHT 1 OF 1